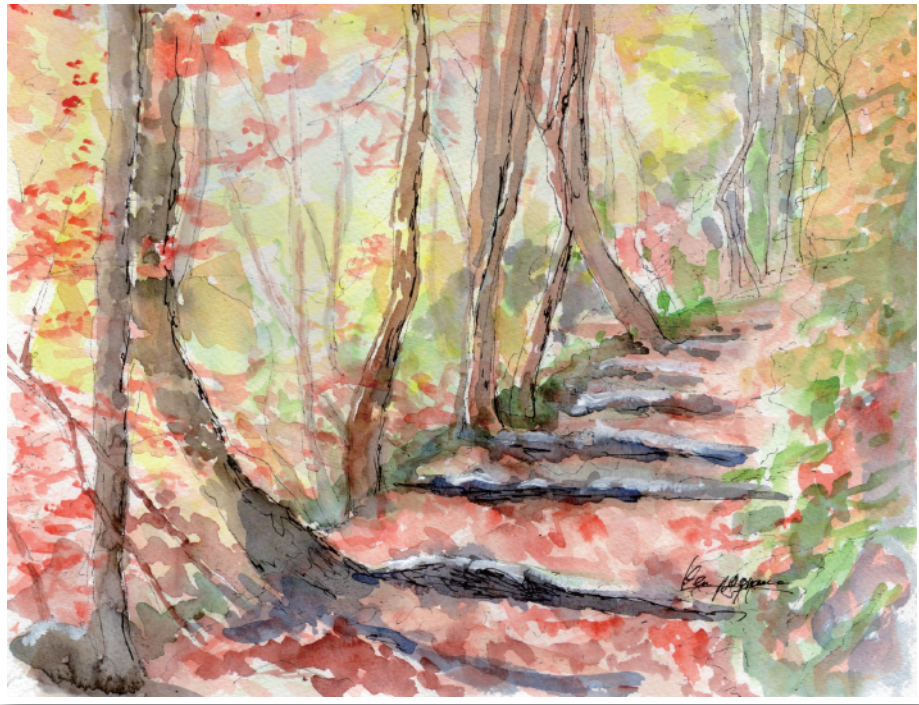


## Shonandaira (Shonan Plateau)



Shonandaira plateau rises 179m above sea level and one of the fifty best attractions in Kanagawa prefecture. From the top visitors can enjoy a view of Sagami Bay, Tanzawa through to the Hakone mountain chains and Izu and Boso peninsulas.

On the way from Oiso station to Shonandaira, there are twenty horizontal holes called “YOKOANA” , which are ruins of old graves dug in the 7 century and preserved as part of Kanagawa’s cultural heritage.

## Komayama Mountain and Takaku Shrine

Takaku Shrine was established in 717AD with the name “Koma Shrine” . “Komayama” , Mountain (168m) is depicted in one of the prints of the Fifty-three Stations of the Tokaido by the famous “Ukiyo-e” artist Hiroshige Utagawa.

It is blessed with a wide variety of trees, some of which are designated as protected species by Kanagawa prefecture.



Enjoy a nice hike in the mountains. At the back of the venerable Takaku Shrine is an entrance to the treasures of nature. You can select either of the two routes, a steep slope called “Otokozaaka” , or a gentle slope called “Onnazaka”.

The top of the mountain provides you with a fabulous view of Oiso town and Sagami Bay.