

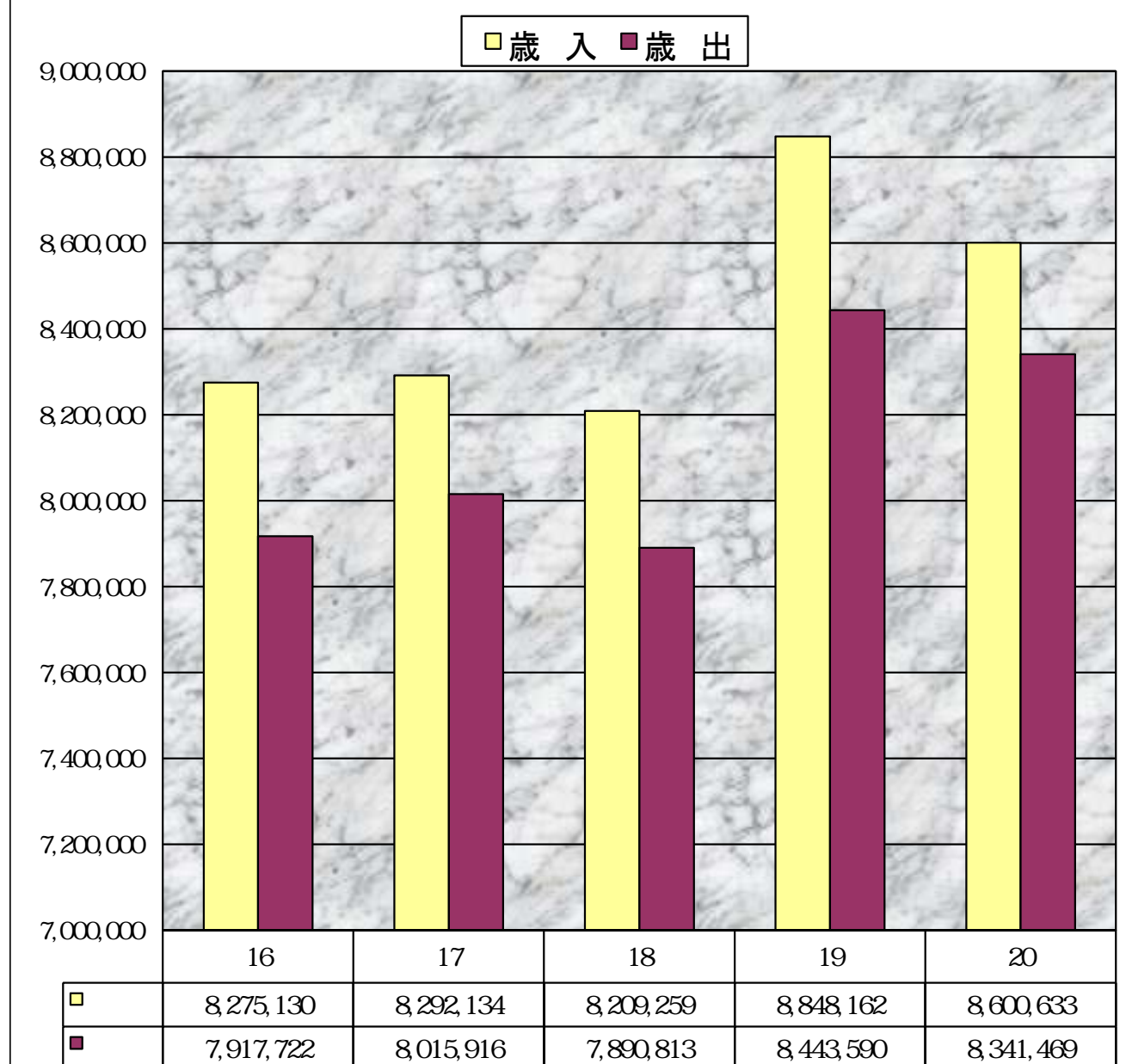
平成 20 年度大磯町一般会計決算の概要

20			86	63		2.8
83	4,147	1.2			5,916	35.9
		3,505				2,411
38.3			54	5,499	5,660	1.0
	10.3					2.0
	0.6					
123.8					4,028	8,492
	60.8					
				8,837	(18.0)	
2,802		93.0				
					567	
6.6		2,658	7.7		1,558	9.2
						3,205
19.4						
			9,974		10.8	
				2,009	2.0	
2,233		91.3				6,846
			383	1.5		
5,880	2.4	6,830		4.9		
					2,135	13.8
20						

(単位 千円)

				()
	9,401,246	8,600,633	800,613	91.5
	9,401,246	8,341,469	1,059,777	88.7
		259,164		
		35,048		
		224,116		

(単位 千円)



※ 上記表中の平成16年度歳入歳出決算額は、減税補てん債の借換え分(8億3,970万円)を除いた数値となっています。

歳入

(単位 千円)

	A		B			B A
1.	5,374,919	5,690,020	5,454,989	11,976	223,055	80,070
2	86,000	81,453	81,453	0	0	4,547
3	27,000	24,417	24,417	0	0	2,583
4	34,000	11,503	11,503	0	0	22,497
5	22,000	4,292	4,292	0	0	17,708
6	265,000	241,591	241,591	0	0	23,409
7.	23,000	20,040	20,040	0	0	2,960
8	88,000	66,567	66,567	0	0	21,433
9	72,909	72,821	72,821	0	0	88
10	177,176	224,591	224,591	0	0	47,415
11.	7,494	5,657	5,657	0	0	1,837
12	58,717	71,448	69,205	0	2,243	10,488
13	162,192	169,532	167,677	118	1,737	5,485
14	1,017,310	402,076	402,076	0	0	615,234
15	445,208	431,205	431,205	0	0	14,003
16	45,391	17,201	17,201	0	0	28,190
17.	3,231	3,178	3,178	0	0	53
18	561,845	361,842	361,842	0	0	200,003
19	404,572	404,572	404,572	0	0	0
20	148,082	206,389	162,456	0	43,933	14,374
21.	377,200	373,300	373,300	0	0	3,900
	9,401,246	8,883,695	8,600,633	12,094	270,968	800,613

歳出

(単位 千円)

	+ A	B	C	A B C D	E	F	D E F
1.	136,265	0	0	136,265	132,880	0	3,385
2.	2,051,085	0	6,109	2,057,194	1,486,402	537,305	33,487
3.	2,326,349	0	1,375	2,327,724	2,280,692	18,698	28,334
4.	957,885	0	2,886	960,771	911,196	6,668	42,907
5.	31,893	0	0	31,893	31,819	0	74
6.	79,350	0	24	79,374	76,804	0	2,570
7.	146,563	0	0	146,563	132,832	0	13,731
8.	1,227,112	74,021	4,802	1,305,935	1,027,068	17,906	260,961
9.	482,927	0	607	483,534	440,649	34,155	8,730
10.	882,927	0	4,271	887,198	859,650	8,930	18,618
11.	2,500	0	3,608	6,108	4,899	0	1,209
12.	956,854	0	0	956,854	956,022	0	832
13.	515	0	42	557	556	0	1
14.	45,000	0	23,724	21,276	0	0	21,276
	9,327,225	74,021	0	9,401,246	8,341,469	623,662	436,115

歳入

(単位 %)

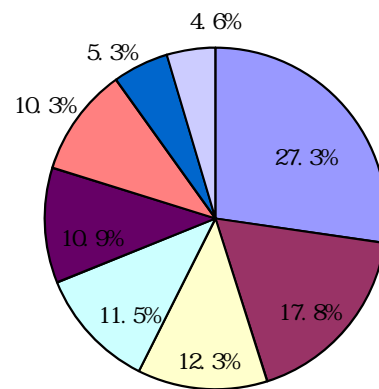
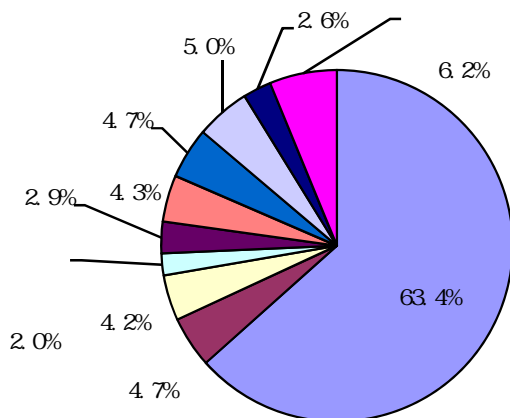
1.	101.5	63.4
2.	94.7	0.9
3.	90.4	0.3
4.	33.8	0.1
5.	19.5	0.1
6.	91.2	2.8
7.	87.1	0.2
8.	75.6	0.8
9.	99.9	0.9
10.	126.8	2.6
11.	75.5	0.1
12.	117.9	0.8
13.	103.4	2.0
14.	39.5	4.7
15.	96.9	5.0
16.	37.9	0.2
17.	98.4	0.0
18.	64.4	4.2
19.	100.0	4.7
20.	109.7	1.9
21.	99.0	4.3
	91.5	100.0

歳出

(単位 %)

1.	97.5	1.6
2.	72.3	17.8
3.	98.0	27.3
4.	94.8	10.9
5.	99.8	0.4
6.	96.8	0.9
7.	90.6	1.6
8.	78.6	12.3
9.	91.1	5.3
10.	96.9	10.3
11.	80.2	0.1
12.	99.9	11.5
13.	99.8	0.0
14.	0.0	0.0
	88.7	100.0

※構成比は、端数処理の結果、合計が符合しない場合があります。



※構成比は、端数処理の結果、合計が符合しない場合があります。

歳入

(単位 千円・%)

	20		19			
①	5,454,989	63.4	5,398,393	61.0	56,596	1.0
2	81,453	0.9	84,712	1.0	3,259	3.8
3	24,417	0.3	24,740	0.3	323	1.3
4	11,503	0.1	26,241	0.3	14,738	56.2
5	4,292	0.1	19,467	0.2	15,175	78.0
6	241,591	2.8	259,491	2.9	17,900	6.9
7	20,040	0.2	21,768	0.2	1,728	7.9
8	66,567	0.8	87,717	1.0	21,150	24.1
9	72,821	0.9	32,544	0.4	40,277	123.8
10	224,591	2.6	139,668	1.6	84,923	60.8
11	5,657	0.1	6,646	0.1	989	14.9
⑫	69,205	0.8	73,600	0.8	4,395	6.0
⑬	167,677	2.0	174,050	2.0	6,373	3.7
14	402,076	4.7	490,443	5.5	88,367	18.0
15	431,205	5.0	448,543	5.1	17,338	3.9
⑯	17,201	0.2	245,224	2.8	228,023	93.0
⑰	3,178	0.0	4,329	0.0	1,151	26.6
⑱	361,842	4.2	550,479	6.2	188,637	34.3
⑲	404,572	4.7	318,446	3.6	86,126	27.0
⑳	162,456	1.9	134,861	1.5	27,595	20.5
21	373,300	4.3	306,800	3.5	66,500	21.7
	8,600,633	100.0	8,848,162	100.0	247,529	2.8

※ 構成比は端数処理の結果、合計が符合しない場合があります。

	77.2		78.0		0.8	1.0
--	------	--	------	--	-----	-----

※ 性質別欄の○数字は自主財源

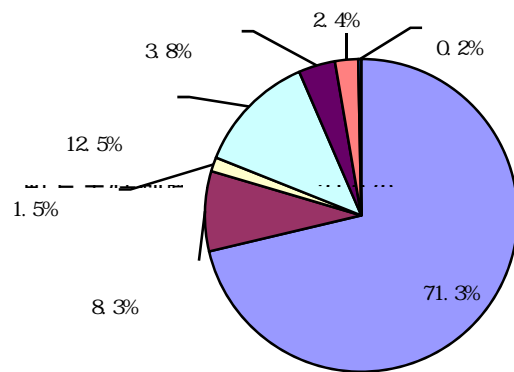
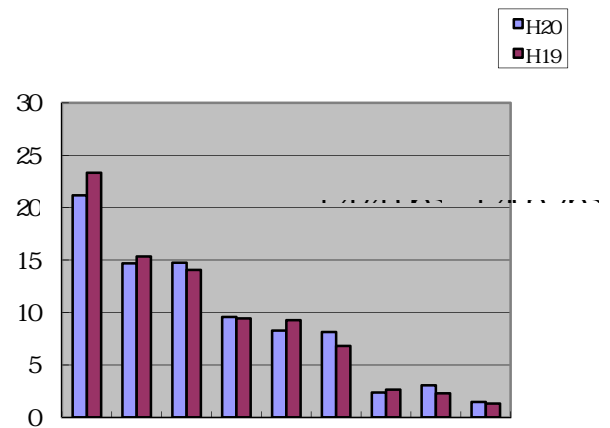
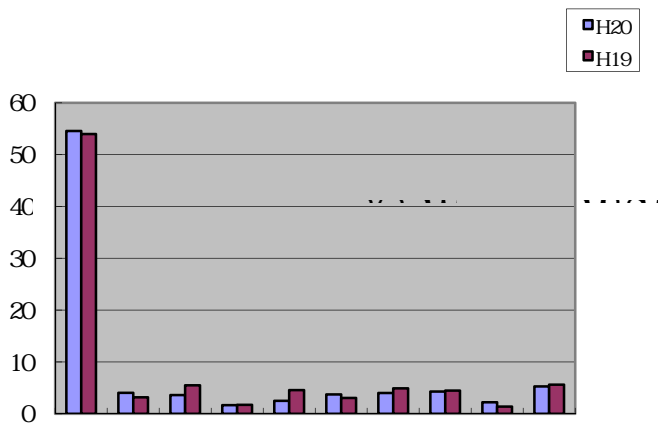
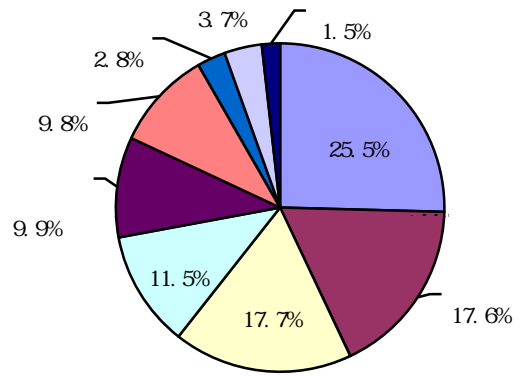
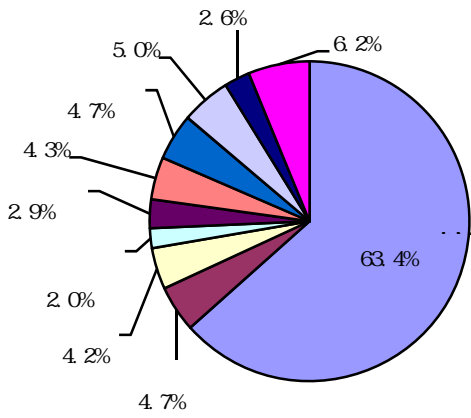
歳 出

(単位 千円・%)

	20		19			
	2,116,854	25.5	2,332,435	27.7	215,581	9.2
(1)	80,246	1.0	85,918	1.0	5,672	6.6
(2)	50,523	0.6	50,180	0.6	343	0.7
(3)	31,079	0.4	30,243	0.4	836	2.8
(4)	1,509,182	18.1	1,635,760	19.4	126,578	7.7
(5)	264,264	3.2	277,406	3.3	13,142	4.7
(6)	175,016	2.1	246,268	2.9	71,252	28.9
(7)	6,544	0.1	6,660	0.1	116	1.7
	1,467,599	17.6	1,533,545	18.1	65,946	4.3
(1)	127,189	1.5	171,850	2.0	44,661	26.0
(2)	6,264	0.1	5,257	0.1	1,007	19.2
(3)	375	0.0	299	0.0	76	25.4
(4)	288,488	3.5	301,033	3.6	12,545	4.2
(5)	48,899	0.6	49,967	0.6	1,068	2.1
(6)	790,966	9.5	804,890	9.5	13,924	1.7
(7)	9,806	0.1	10,544	0.1	738	7.0
(8)	195,612	2.3	189,705	2.2	5,907	3.1
	84,529	1.1	70,180	0.8	14,349	20.4
(1)	29,728	0.4	24,910	0.3	4,818	19.3
(2)	5,150	0.1	3,649	0.0	1,501	41.1
(3)	8,579	0.1	5,776	0.1	2,803	48.5
(4)	41,072	0.5	35,845	0.4	5,227	14.6

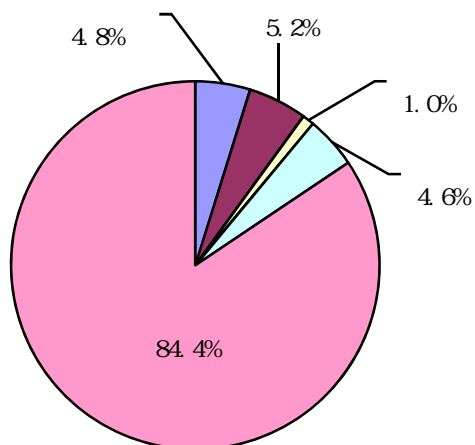
	20		19			
	812,837	9.8	680,783	8.0	132,054	19.4
(1)	425,390	5.1	380,980	4.5	44,410	11.7
(2)	15,302	0.2	15,890	0.2	588	3.7
(3)	312,314	3.7	222,722	2.6	89,592	40.2
(4)	20	0.0	100	0.0	80	80.0
(5)	46,652	0.6	48,623	0.6	1,971	4.1
(6)	13,159	0.2	12,468	0.1	691	5.5
	305,079	3.7	228,119	2.7	76,960	33.7
(1)	4,727	0.1	10,864	0.1	6,137	56.5
(2)	134,156	1.6	126,570	1.5	7,586	6.0
(3)	166,196	2.0	90,685	1.1	75,511	83.3
	826,427	9.9	926,170	11.0	99,743	10.8
(1)	443,512	5.3	480,521	5.7	37,009	7.7
(2)	382,915	4.6	445,649	5.3	62,734	14.1
	0	0.0	0	0.0	0	0.0
(1)	0	0.0	0	0.0	0	0.0
(2)	0	0.0	0	0.0	0	0.0
	956,022	11.5	943,200	11.2	12,822	1.4
	236,259	2.8	262,926	3.1	26,667	10.1
10.	61,800	0.7	60,469	0.7	1,331	2.2
11.	1,474,063	17.7	1,405,763	16.6	68,300	4.9
	8,341,469	100.0	8,443,590	100.0	102,121	1.2

※ 性質別分類は、総務省地方財政状況調査に基づくものとしています。
 ※ 構成比は端数処理の結果、合計が符合しない場合があります。



(単位 千円)

1.	132,880	0	0	0	0	132,880
2.	1,486,402	38,948	113,624	19,700	62,224	1,251,906
3.	2,280,692	270,627	297,189	0	82,688	1,630,188
4.	911,196	650	6,844	0	92,240	811,462
5.	31,819	0	0	0	30,000	1,819
6.	76,804	140	907	0	5,736	70,021
7.	132,832	0	400	10,800	32,783	88,849
8.	1,027,068	79,366	1,309	33,900	24,872	887,621
9.	440,649	9,678	10,000	21,900	128	398,943
10.	859,650	2,667	932	0	48,875	807,176
11.	4,899	0	0	0	0	4,899
12.	956,022	0	0	0	483	955,539
13.	556	0	0	0	556	0
	8,341,469	402,076	431,205	86,300	380,585	7,041,303

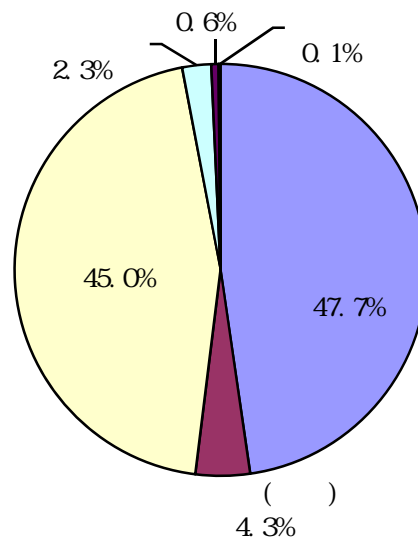


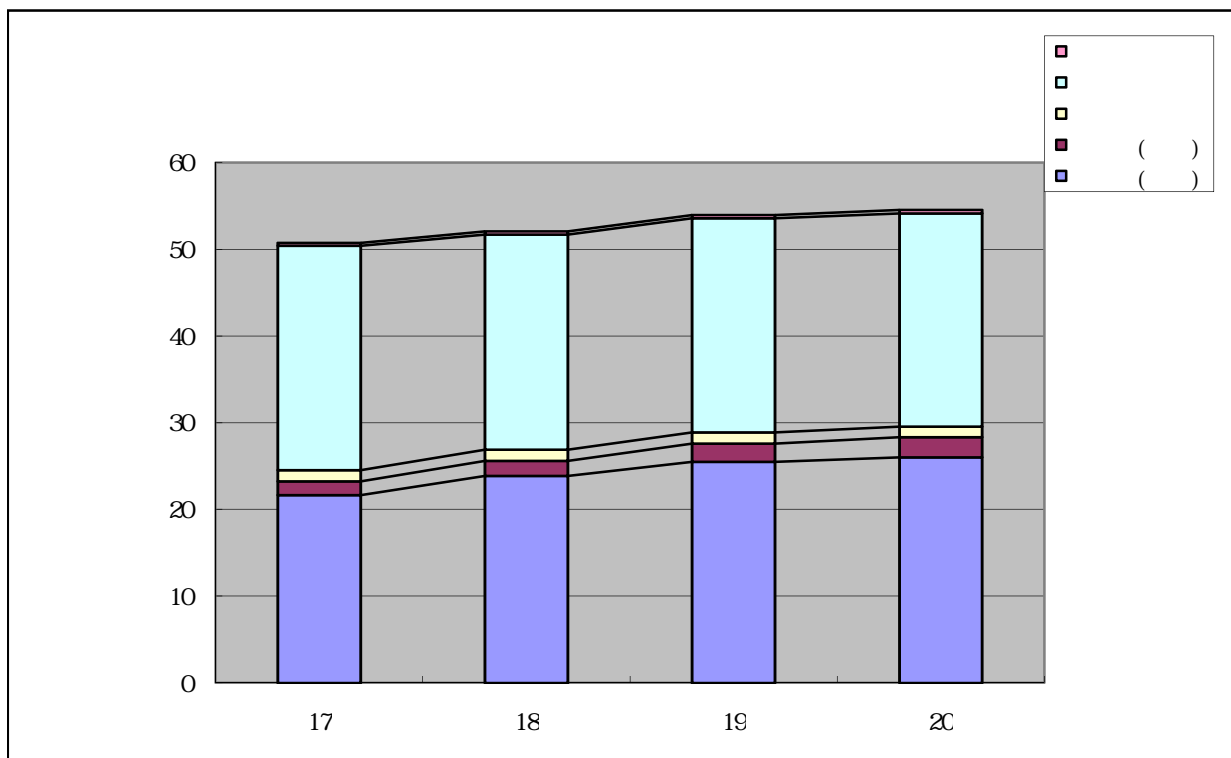
(単位 千円・%)

		2,853,557	2,812,177	98.5
		99,405	22,191	22.3
		2,952,962	2,834,368	96.0
(1)		2,620,447	2,579,974	98.5
		97,364	21,994	22.6
		2,717,811	2,601,968	95.7
(2)		233,110	232,203	99.6
		2,041	197	9.7
		235,151	232,400	98.8
		2,484,842	2,428,821	97.7
		87,270	28,145	32.3
		2,572,112	2,456,966	95.5
(1)		2,483,670	2,427,649	97.7
		87,270	28,145	32.3
		2,570,940	2,455,794	95.5
(2)		1,172	1,172	100.0
		0	0	0.0
		1,172	1,172	100.0
		32,395	31,859	98.3
		1,072	317	29.6
		33,467	32,176	96.1
		123,304	123,304	100.0
		0	0	0.0
		123,304	123,304	100.0
		8,175	8,175	100.0
		0	0	0.0
		8,175	8,175	100.0
		5,502,273	5,404,336	98.2
		187,747	50,653	27.0
		5,690,020	5,454,989	95.9

(単位 千円・%)

		17	18	19	20
		2,398,529	2,634,305	2,862,504	2,952,962
		2,324,198	2,561,168	2,760,896	2,834,368
		2,724,823	2,608,814	2,601,322	2,572,112
		2,587,478	2,480,379	2,470,893	2,456,966
		29,591	31,168	32,271	33,467
		28,245	29,924	31,005	32,176
		130,657	130,810	129,214	123,304
		130,657	130,810	129,214	123,304
		38,418	38,418	38,418	0
		0	0	0	0
		4,843	7,251	6,386	8,175
		4,843	7,251	6,386	8,175
		5,326,861	5,450,765	5,670,114	5,690,020
		5,075,421	5,209,531	5,398,393	5,454,989
		95.3	95.6	95.2	95.9
100	17	100.0	102.3	106.4	106.8
		100.0	102.6	106.4	107.5





(単位 千円・%)

		17	18	19	20
		248,600	247,039	229,899	187,747
		44,294	52,120	35,067	50,653
		17.8	21.1	15.3	27.0
		5,326,861	5,450,765	5,670,114	5,690,020
		4.7	4.5	4.1	3.3

(単位 千円・%)

				()	()	¹⁶ 100
16	7,917,722	4,969,551	2,457,510	31.0	49.5	100.0
17	8,015,916	5,075,421	2,515,470	31.4	49.6	102.4
18	7,890,813	5,209,531	2,285,431	29.0	43.9	93.0
19	8,443,590	5,398,393	2,332,435	27.6	43.2	94.9
20	8,341,469	5,454,989	2,116,854	25.4	38.8	86.1

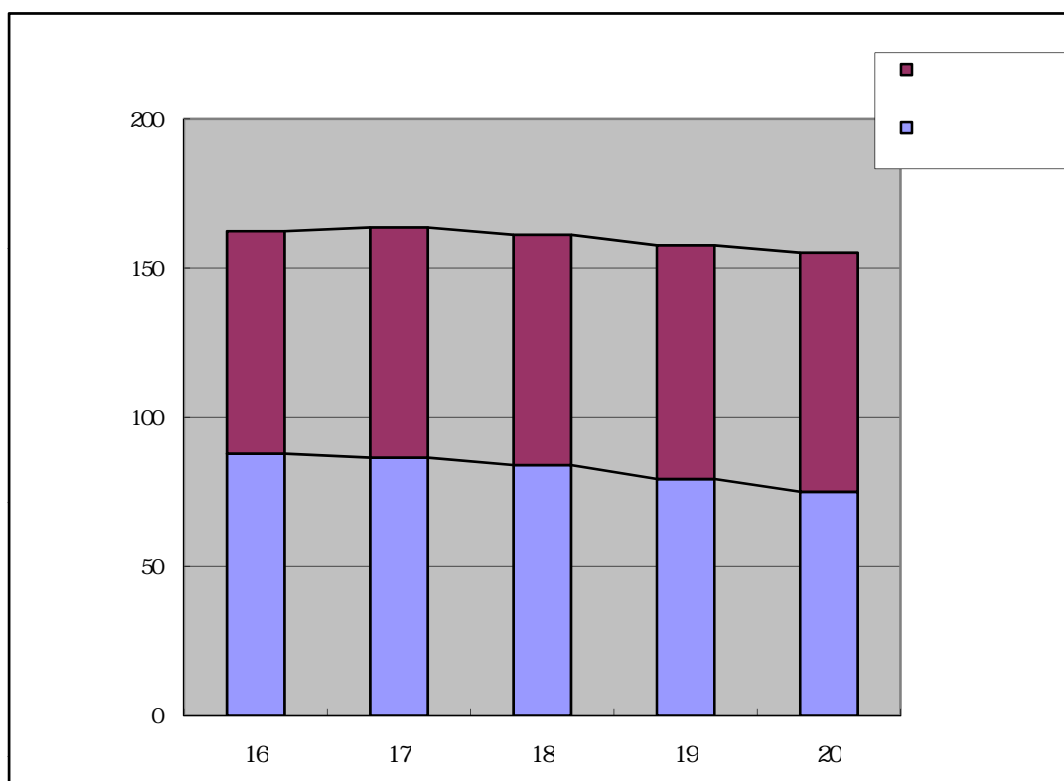
※ 上記表中の平成16年度歳出総額は、減税補てん債の借換え分(8億3,970万円)を除いた数値となっています。

(単位 千円)

		19	20		20
1	1	6,193,994	373,300	602,862	5,964,432
		3,444,536	373,300	381,604	3,436,232
		2,749,458	0	221,258	2,528,200
	2	109,992	0	9,151	100,841
	3	748,014	0	64,062	683,952
	4	330,827	0	49,175	281,652
	5	544,711	0	77,086	467,625
	7,927,538	373,300	802,336	7,498,502	
1	1	4,674,428	302,700	182,298	4,794,830
		3,990,828	302,700	182,298	4,111,230
		683,600	0	0	683,600
	2	3,003,769	264,800	201,580	3,066,989
	3	2,666	0	667	1,999
	4	151,920	0	3,524	148,396
		7,832,783	567,500	388,069	8,012,214
	15,760,321	940,800	1,190,405	15,510,716	

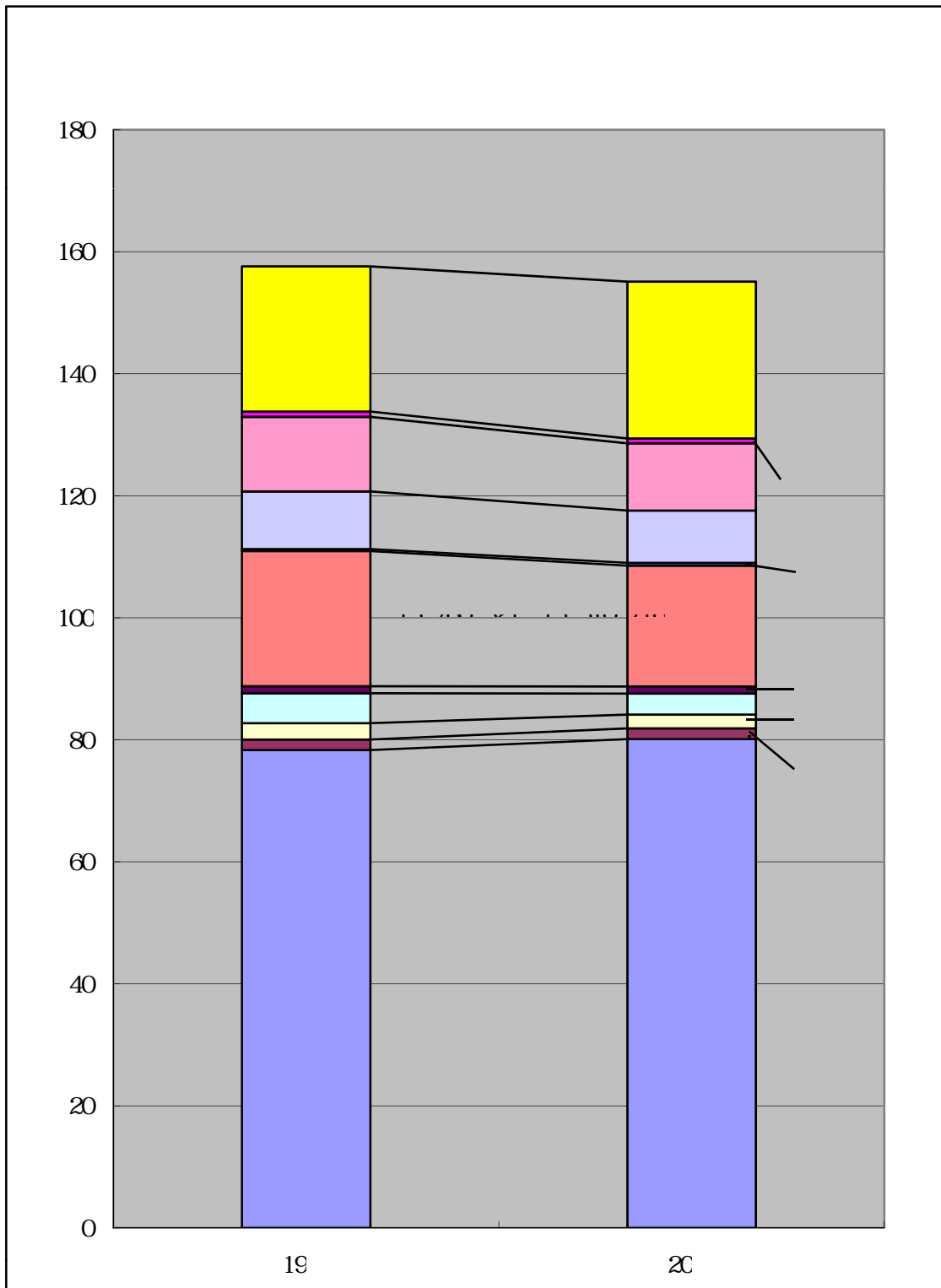
単位：千円

	16	17	18	19	20
	8,777,404	8,643,443	8,396,072	7,927,538	7,498,502
	7,456,103	7,714,660	7,717,713	7,832,783	8,012,214



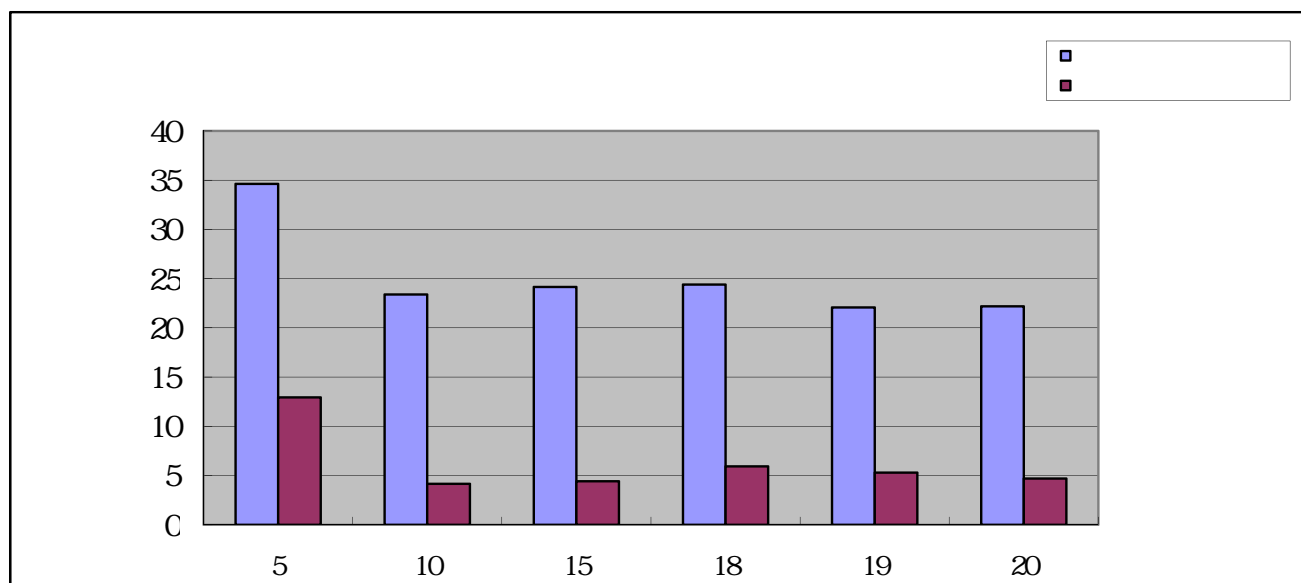
(単位 千円)

	19	20
	7,832,783	8,012,214
	172,887	175,307
	267,587	227,075
	489,986	343,744
	116,100	115,588
	2,215,116	1,981,434
	33,000	46,650
	944,842	856,536
	1,222,067	1,102,081
	87,257	78,866
	2,378,696	2,571,221
	15,760,321	15,510,716



(単位 千円)

	19	20		20
1	140,269	571	0	140,840
2	1,051,789	556	0	1,052,345
	206,271	556	0	206,827
	845,518	0	0	845,518
3	529,945	221,353	282,000	469,298
4	3,000	0	0	3,000
	3,000	0	0	3,000
	0	0	0	0
5	59,960	9,054	0	69,014
6	77,851	3,376	0	81,227
7	213	52,662	15,056	37,819
8	20,367	43	20,000	410
9	87,216	747	0	87,963
10	67,338	495	0	67,833
11	125,809	620	0	126,429
12	43,490	18,938	0	62,428
13	0	20,693	394	20,299
14	0	0	0	0
	2,207,247	329,108	317,450	2,218,905



25 3,478

21

32,908

9,305 - 2,930

6,530
8,448
5,562
4,039
5,071
3,776
3,247
1,327
1,288
1,175

5,168 428

8,978
8,000
6,214
4,463
4,428
4,115
3,488
2,704
2,670
2,330
1,653
1,592
1,539
1,495
1,426
1,243
1,206
1,140

1,210 - 1,178

28

7,834
4,123
3,781
3,059
2,550
2,039
1,499
1,478
1,386
1,288
1,049

7,689 - 790

9,216
2,651
6,153
4,667
4,505
4,148
3,446
2,052
1,594
1,513
1,314

6,123 +994

3,617
3,253
2,878
1,774
1,652
1,419
1,361
1,299
1,079
1,067
1,013

3,390 +440

4,426
3,305
1,126
1,008

4,036 - 575

3,000
1,664
1,633
1,403
1,179

4,038 - 64

2,334 - 404

967 -

3,000

9,051 324

167 70

一般会計決算額を年収500万円の一般家庭の家計簿に置き換えてみると…

収 入	支 出
317	209
93	86
25	56
21	48
44	47
	13
	26
<hr/>	<hr/>
500	485

1. 行政財產

單位：m²

		4,299	3,879	
		1,005	2,475	12
		32,278	10,005	
		115,203	33,822	
		7,358	843	24
		302,561	519	
		36,321	14,316	
		499,025	65,859	

2. 普通財產

單位：m²

		238,323	208	
		13,396	0	
		251,719	208	